



GMT MONTHLY MEMBERSHIP PROGRESS REPORT

Results as of: 6/30/2025

Multiple District 24

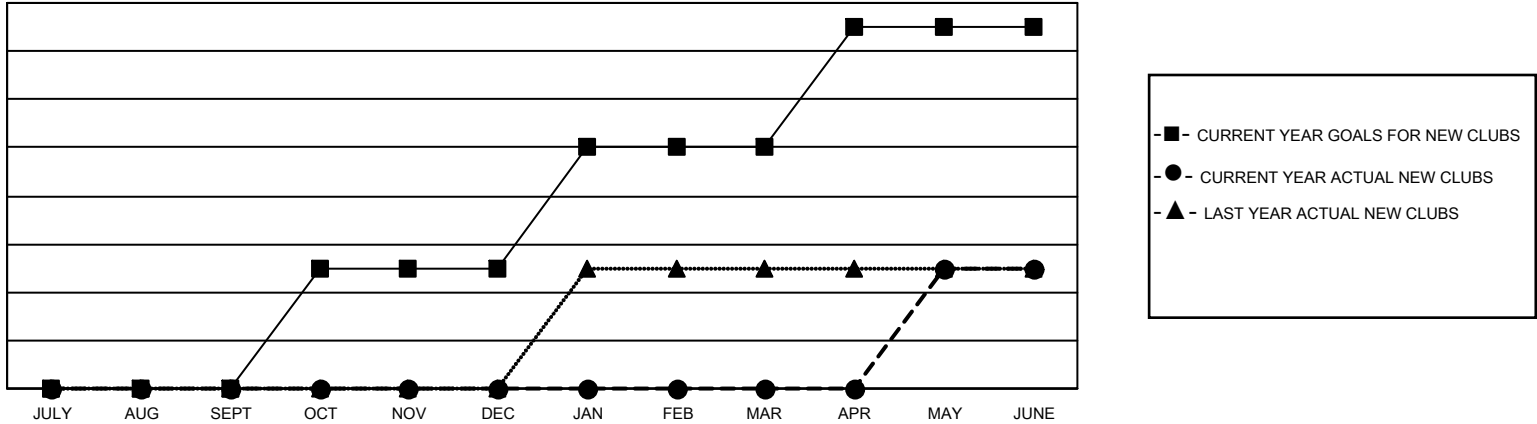
LOCATION: VIRGINIA

GMT: OPEN

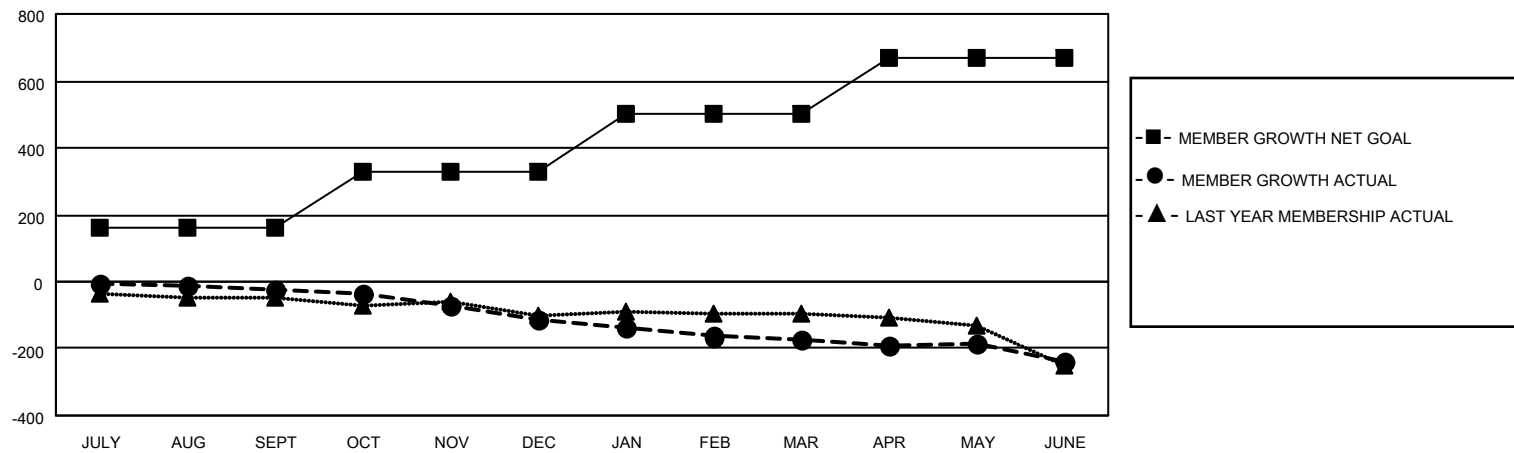
GMT CA 1

| Clubs | | | | Members | | | |
|-----------------------|---------------|-----------|---------------|-----------------------|------------------------|----------------------|--|
| RESULTS FOR 2024-2025 | | | | RESULTS FOR 2024-2025 | | | |
| QUARTER | NEW CLUB GOAL | NEW CLUBS | DROPPED CLUBS | QUARTER | MEMBER GROWTH NET GOAL | MEMBER GROWTH ACTUAL | DROPPED MEMBERS ACTUAL (including transfers) |
| JULY/AUG/SEPT | 0 | 0 | 0 | JULY/AUG/SEPT | 159 | 117 | 126 |
| OCT/NOV/DEC | 1 | 0 | 2 | OCT/NOV/DEC | 170 | 113 | 186 |
| JAN/FEB/MAR | 1 | 0 | 1 | JAN/FEB/MAR | 174 | 105 | 150 |
| APR/MAY/JUNE | 1 | 1 | 5 | APR/MAY/JUNE | 164 | 192 | 221 |

GOALS AND ACTUAL NEW CLUBS CUMULATIVE



GOALS AND ACTUAL MEMBERS CUMULATIVE



| | | | | |
|------------------------|-----|---|-------------------------------------|----------------|
| DROPPED CLUBS: 8 | | 117 CLUBS OF 214 ADDED 1 OR MORE NEW MEMBERS | <u>GENDER DISTRIBUTION</u> | |
| | | | MALE | 3,012 (60.16%) |
| | | | FEMALE | 1,995 (39.84%) |
| <u>DROPPED MEMBERS</u> | | CLICK HERE FOR CUMULATIVE MEMBERSHIP DATA | | |
| DECEASED | 98 | | TOTAL FAMILY UNIT MEMBERS 881 | |
| CLUB CANCELLED | 76 | | | |
| OTHER | 506 | | FAMILY MEMBERS PAYING HALF DUES 448 | |
| TOTAL | 680 | | | |